



PROYECTO FINAL DE CARRERA 2018

CENTRO DE ARTE Y EXPOSICIONES

ALUMNO MAZZOCCHI FRANCISCO

LEGAJO: 32203/9

CATEDRA: BARES-CASAS-SCHNACK

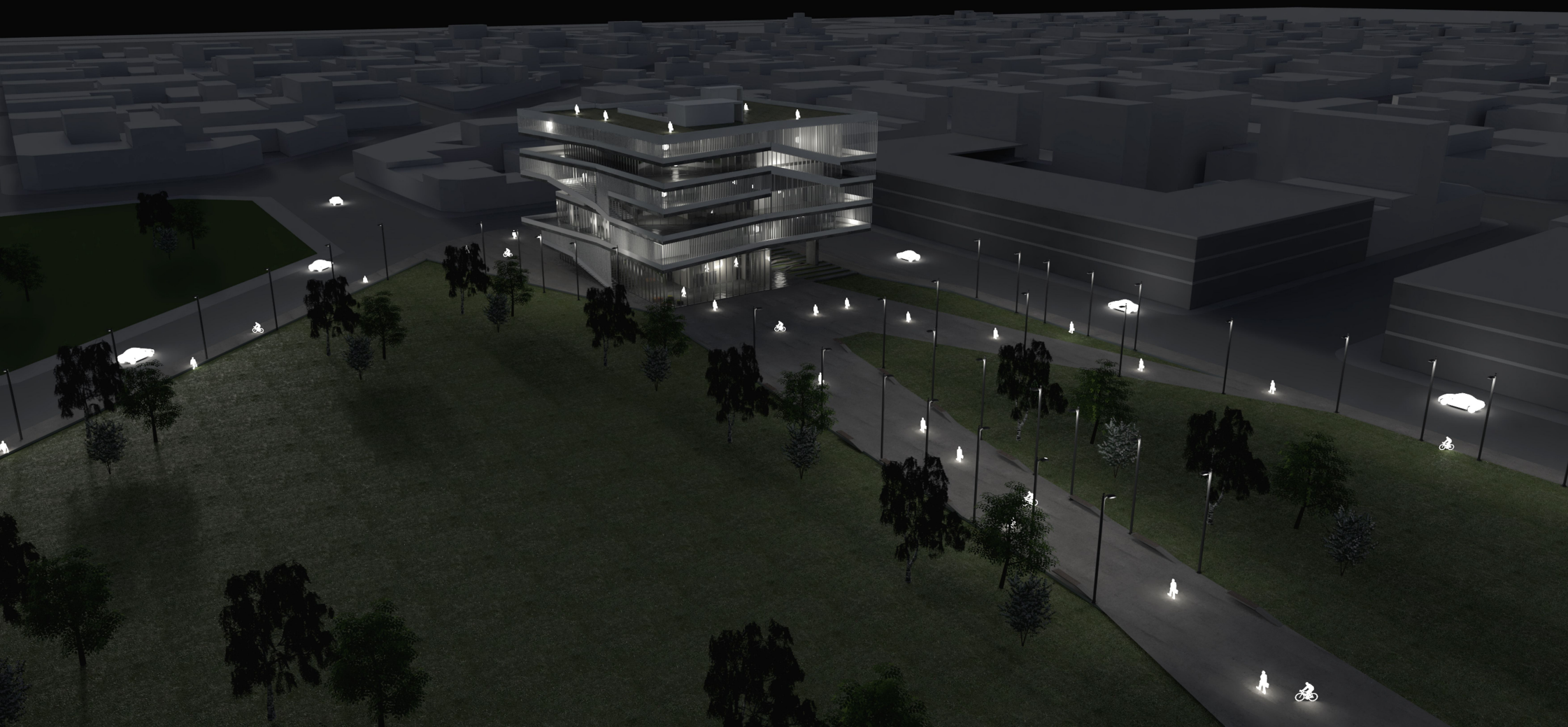
TUTOR: FLORENCIA SCHNACK

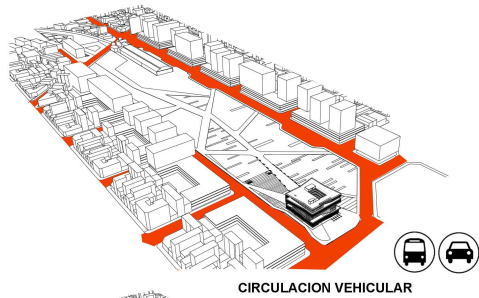
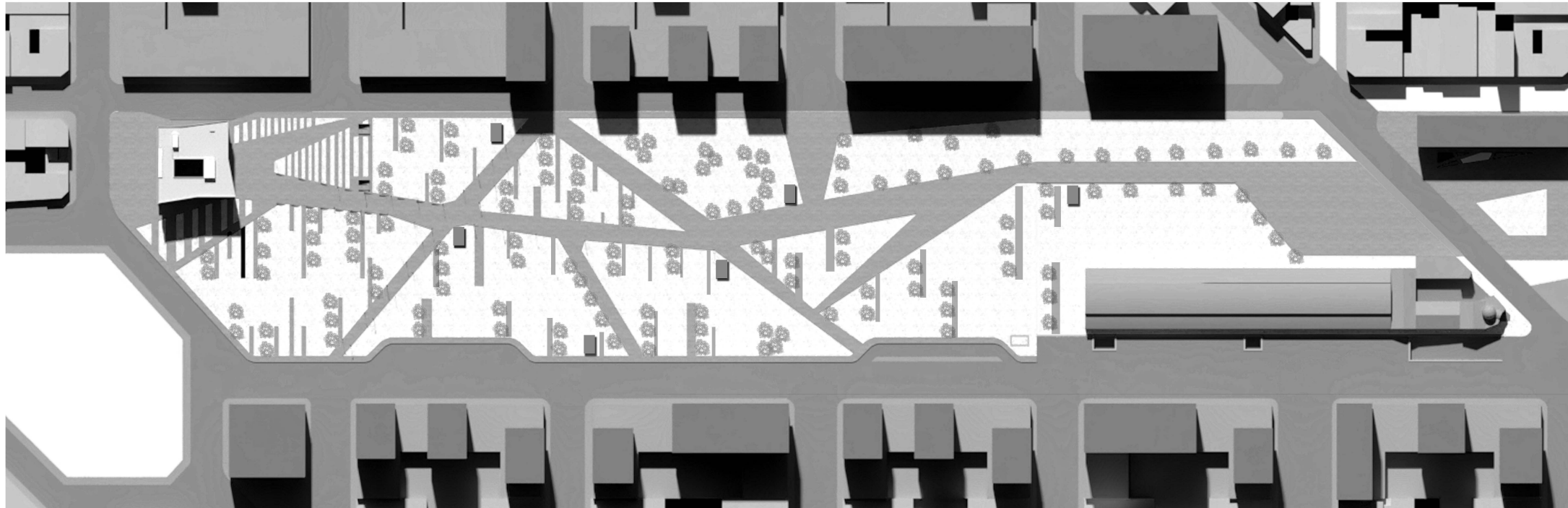
**ASESORES:
GARCIA ZUNIGA
NICO
WALTER
FORNARI**



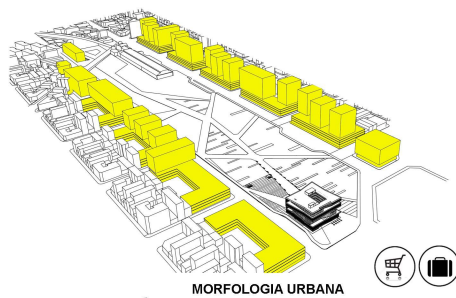
**UNIVERSIDAD
NACIONAL
DE LA PLATA**

CENTRO DE ARTE Y EXPOSICIONES LA PLATA

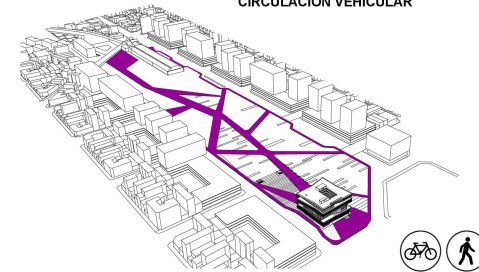




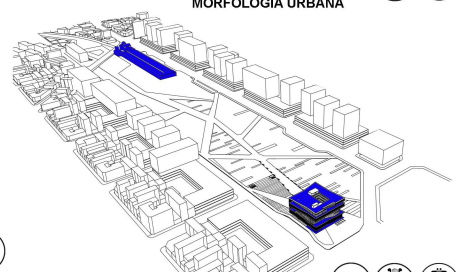
CIRCULACION VEHICULAR



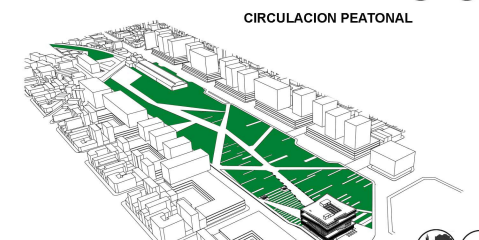
MORFOLOGIA URBANA



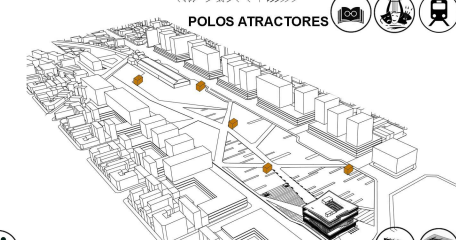
CIRCULACION PEATONAL



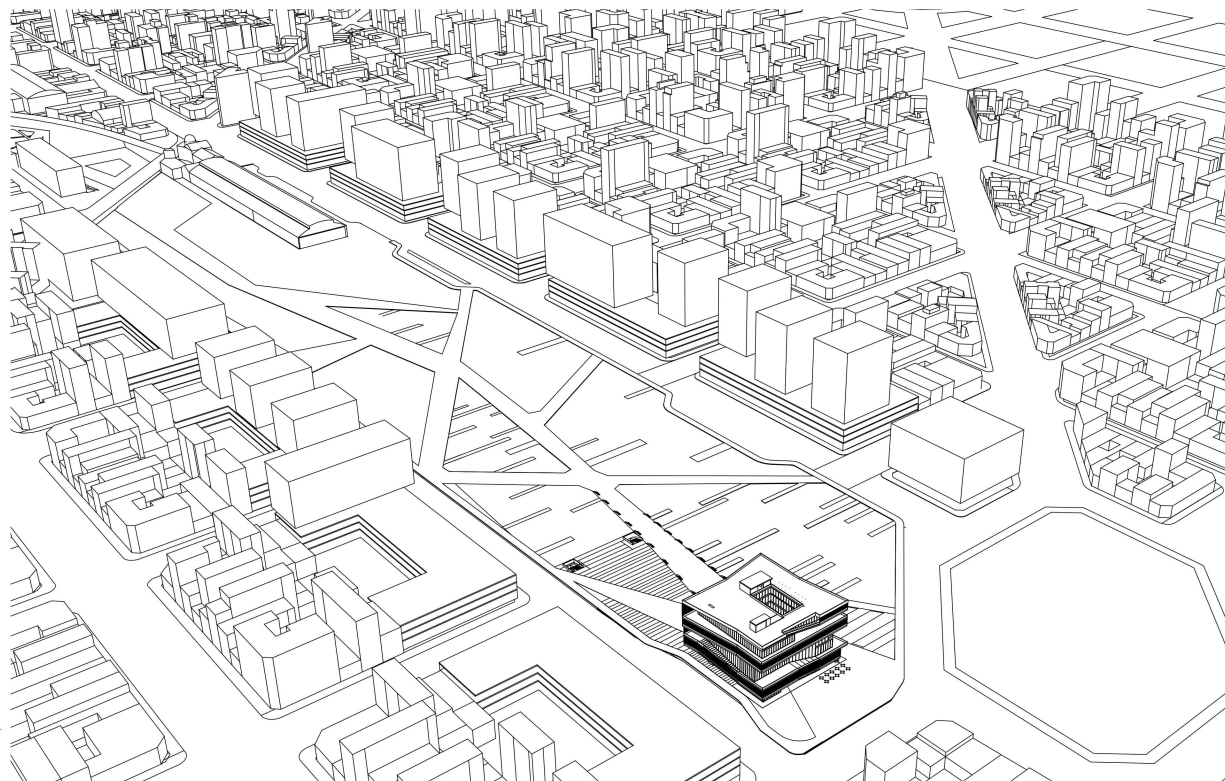
POLOS ATRACTORES



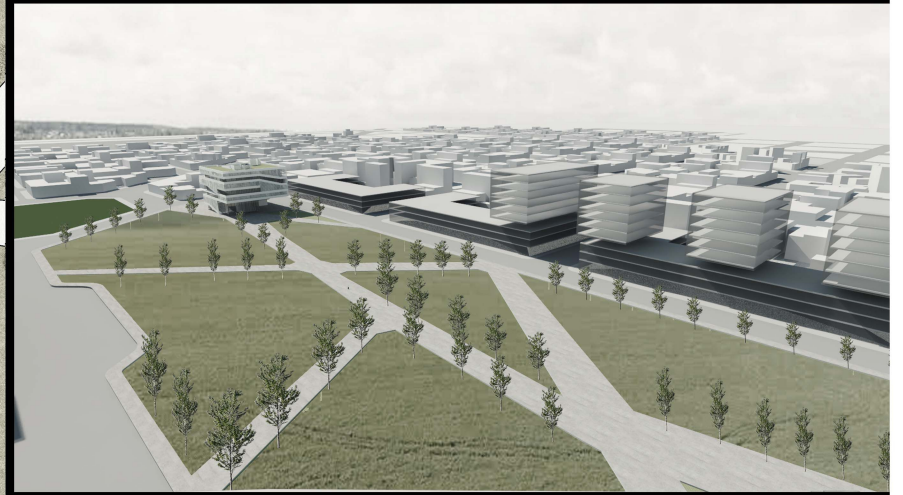
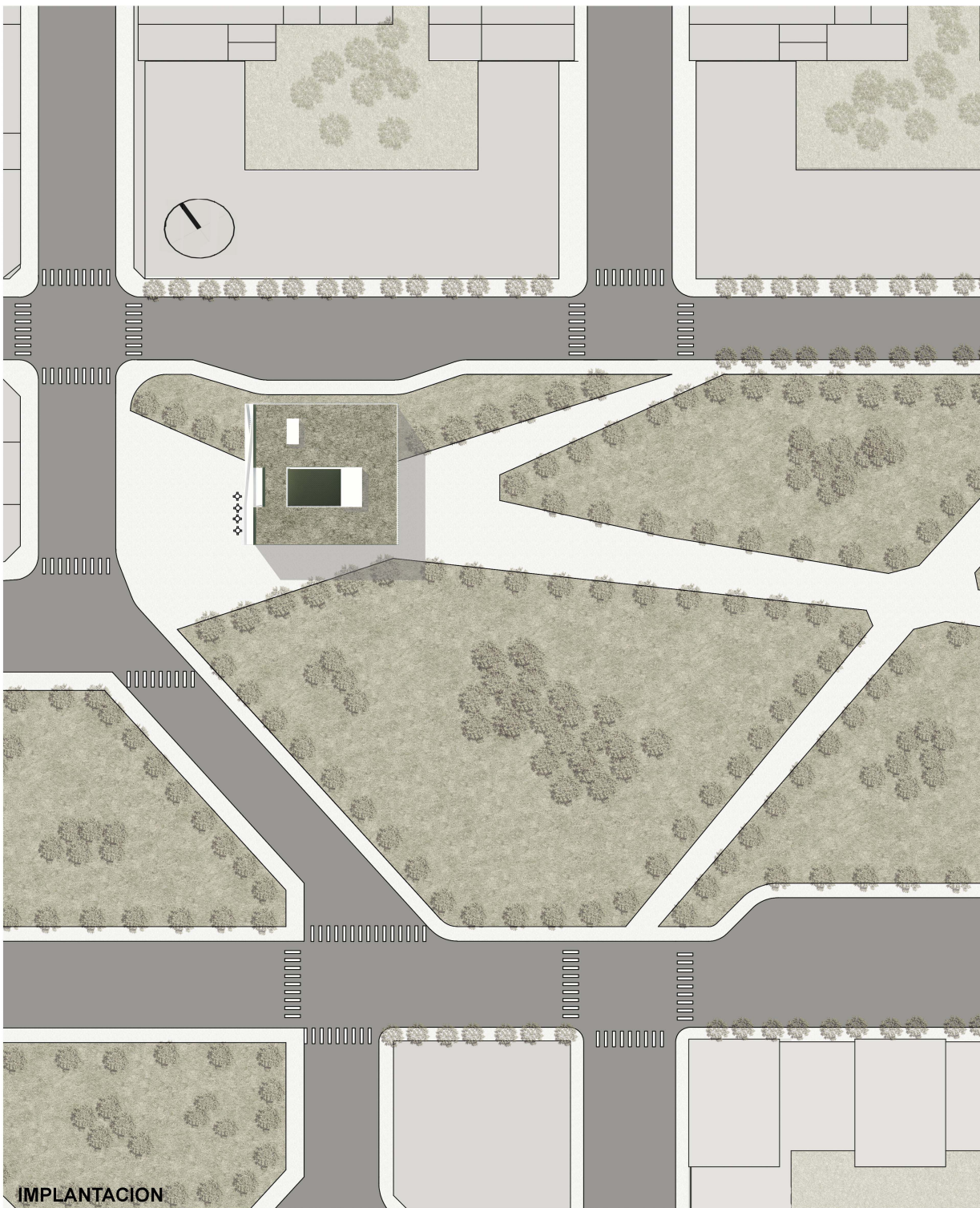
ESPACIOS VERDES



EQUIPAMIENTO URBANO

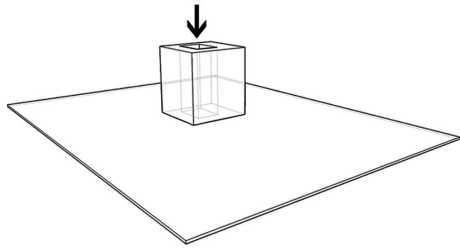


MASTERPLAN

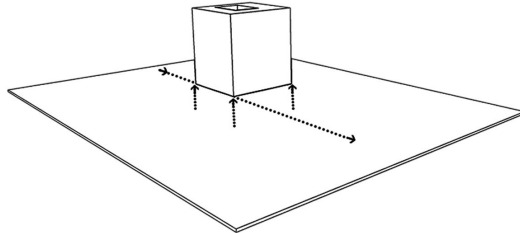


ESQUEMAS PROYECTUALES

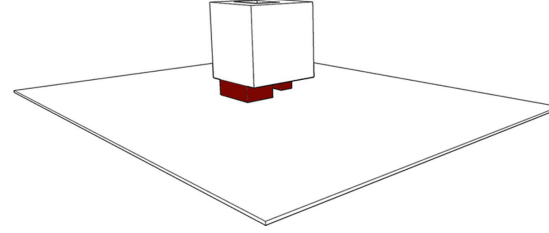
EN LOS ESPACIOS PUBLICOS Y COLECTIVOS SE EXPRESA LA DIVERSIDAD Y SE PRODUCE EL INTERCAMBIO, SOBRE TODO EN LA CIUDAD DE LA PLATA, CIUDAD UNIVERSITARIA, SU ESPACIO PUBLICO ES OBJETO DE UNA RENOVADA APROPIACION DEL CIUDADANO EN ESTOS ULTIMOS AÑOS; EL PROYECTO TOMA ESOS CONCEPTOS PARA UNA ESTRATEGIA URBANA INTEGRADORA DETECTANDO EL PARQUE LINEAL UNIVERSITARIO COMO EJE-CANAL PRINCIPAL QUE VA INTEGRANDO DIFERENTES PAISAJES COMO PLAZAS, PASAJES PEATONALES, EN ESTE NUEVO RECORRIDO UNIVERSITARIO. DE ALLI PARTE LA IDEA URBANA DEL PROYECTO A INTEGRARSE Y DARLE UN COMIENZO Y UN FIN A ESTE RECORRIDO.



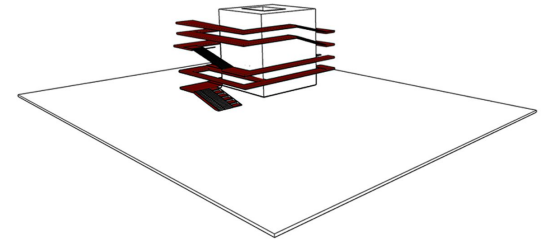
PULMON CENTRAL



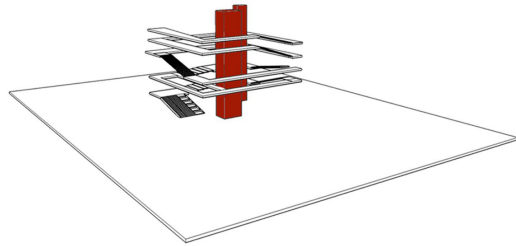
PASAJE PEATONAL



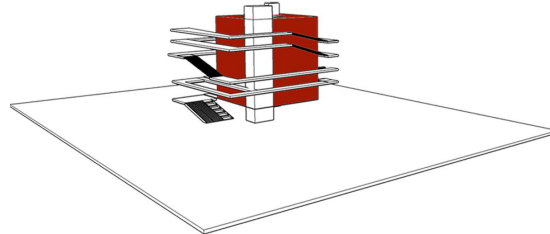
MINIMA PISADA EN EL NIVEL 0



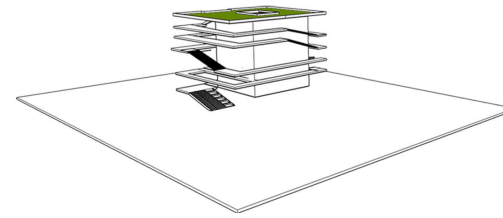
VERTICALIZACION DEL ESPACIO PUBLICO



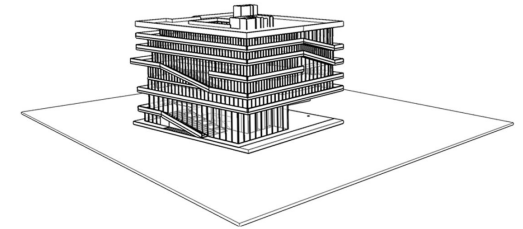
BLOQUE DE SERVICIOS



BLOQUE PROGRAMATICO



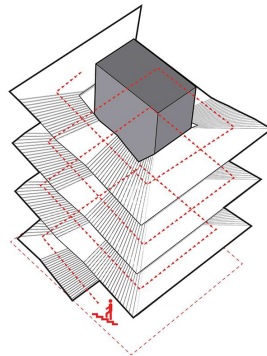
TERRAZA VERDE



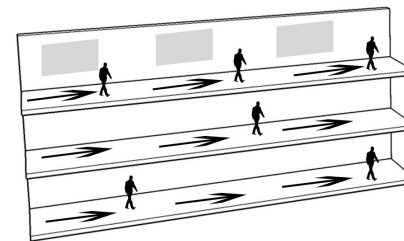
EDIFICIO ICONICO



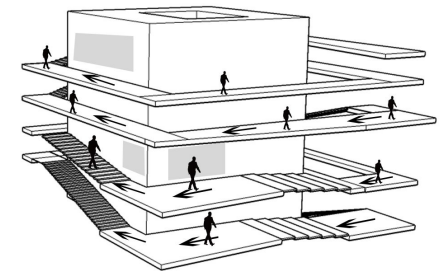
EDIFICIO MIRADOR



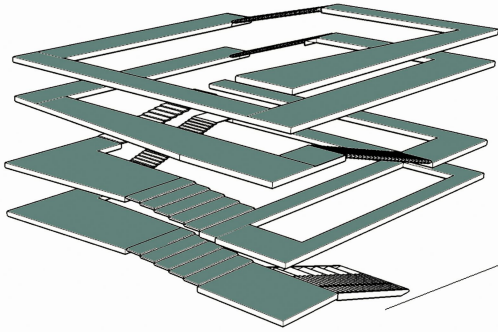
RECORRIDO EN ESPIRAL



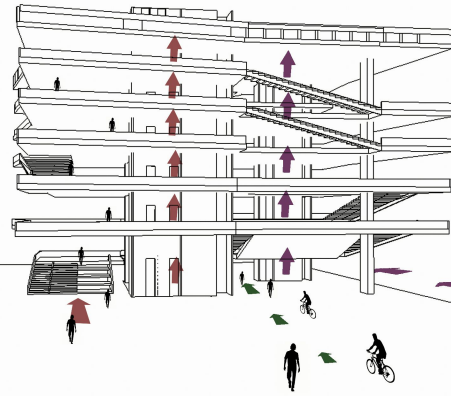
EXPOSICION LINEAL VS EXPOSICION CONTINUA



CIRCULACIONES Y PROGRAMA



ESPACIOS COMUNES Y EXPOSICIONES EN TODO EL EDIFICIO



CIRCULACIONES PUBLICAS Y DE SERVICIOS

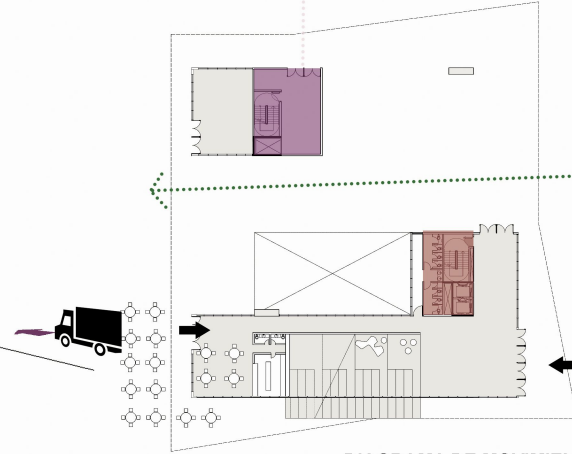
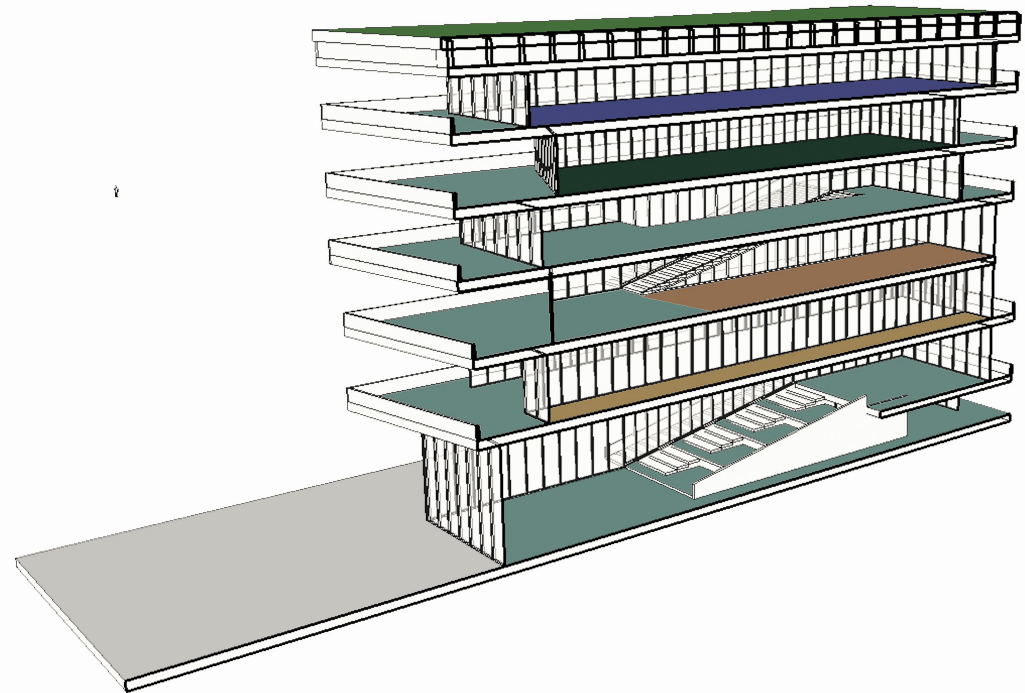
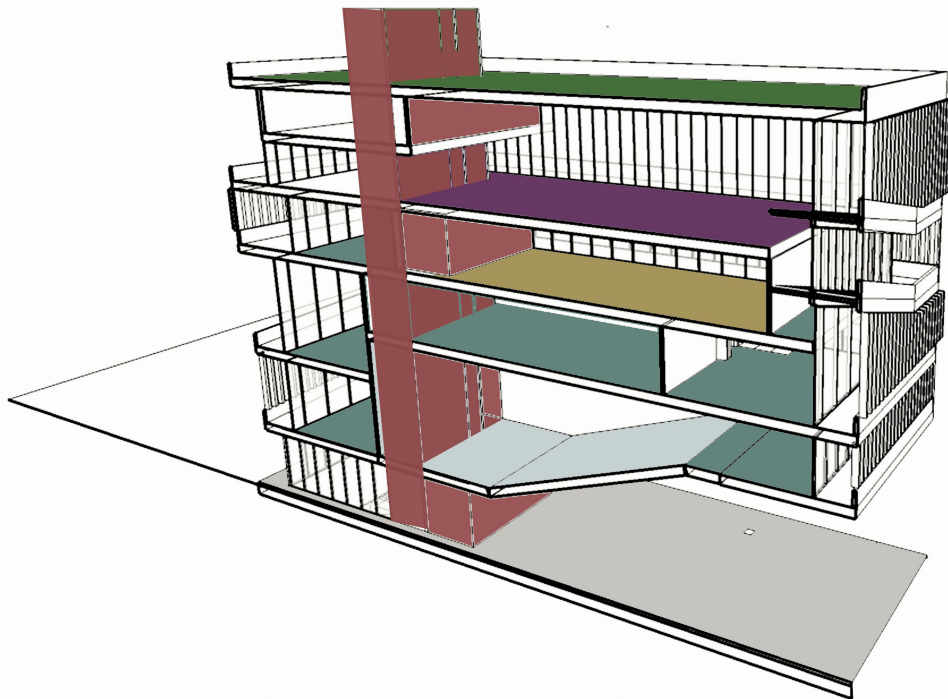
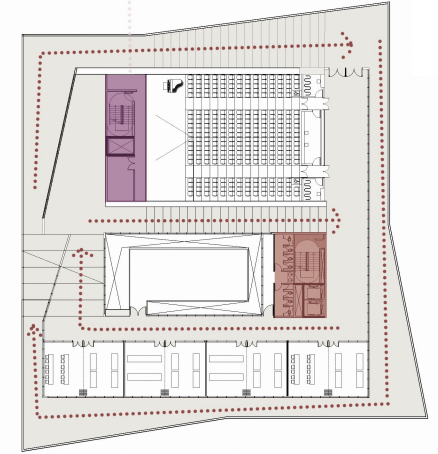
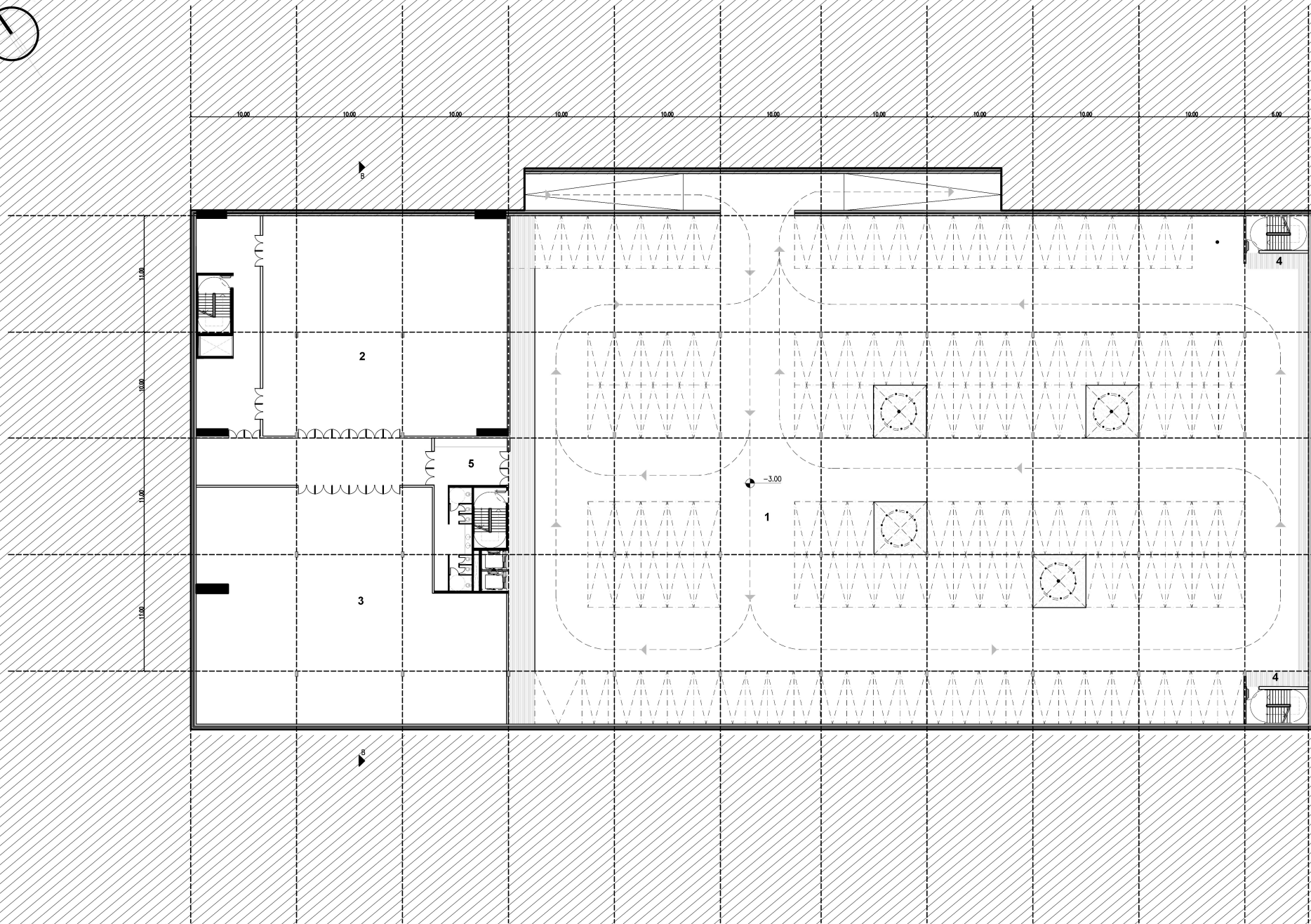


DIAGRAMA DE MOVIMIENTOS

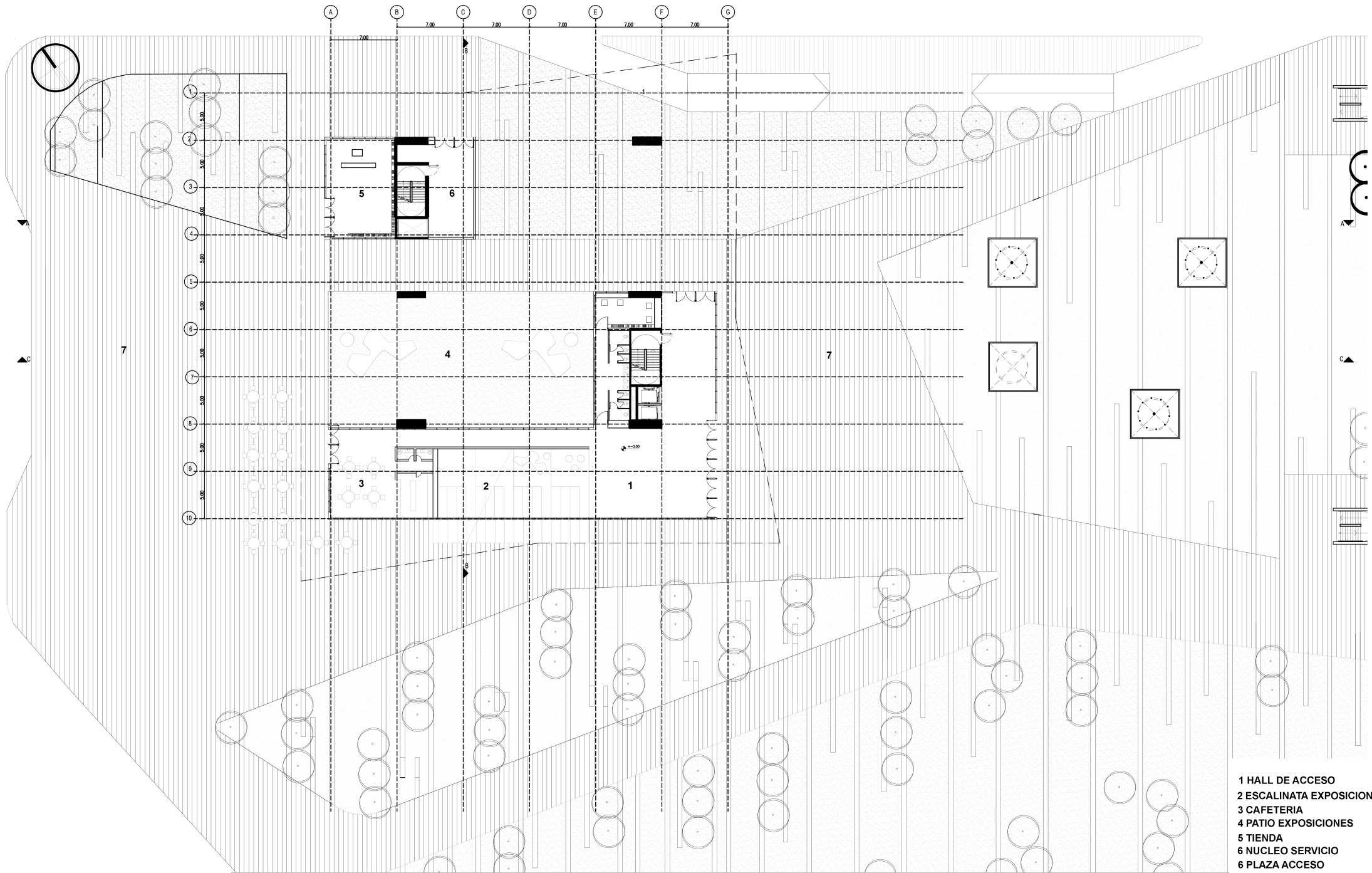


CIRCULACIONES Y SERVICIOS	EXPOSICIONES Y USOS COMUNES	OFICINAS	TALLERES RECONSTRUCCION ARTE	BIBLIO TECA	AUDITORIO	SALONES USO ARTISTICO	PLAZA EXPOSICION	RESTAURANTE MIRADOR Y BAR	AULAS	TERRAZA VERDE	TOTAL
800 m ²	2500 m ²	200 m ²	400 m ²	400m ²	500 m ²	600 m ²	800 m ²	700 m ²	400 m ²	1600 m ²	7000 m ²



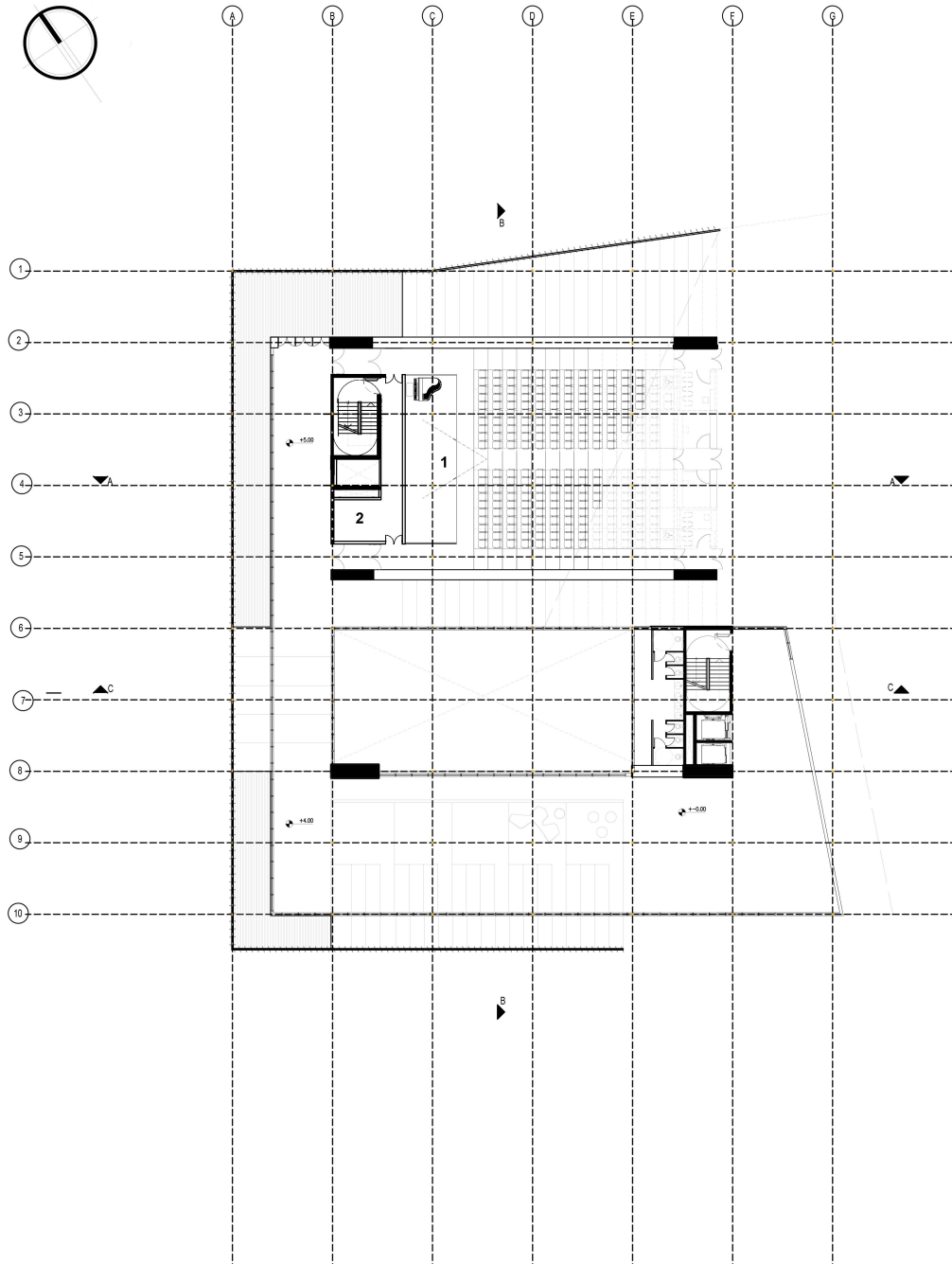
- 1 ESTACIONAMIENTO
- 2 DEPOSITO
- 3 SALA DE MAQUINAS
- 4 SALIDA A PARQUE
- 5 HALL BAÑOS

PLANTA ESTACIONAMIENOT 1:250

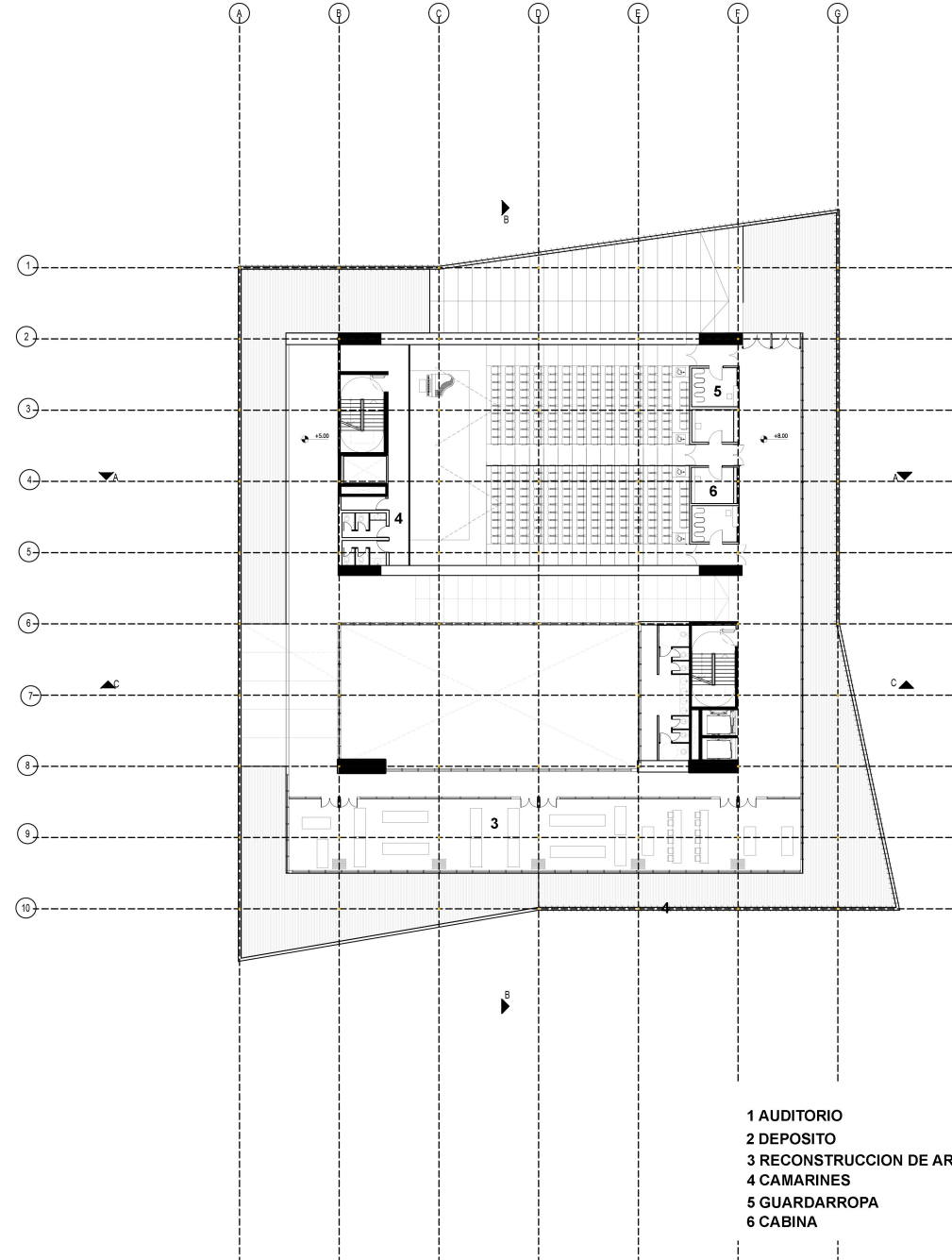


- 1 HALL DE ACCESO
- 2 ESCALINATA EXPOSICIONES
- 3 CAFETERIA
- 4 PATIO EXPOSICIONES
- 5 TIENDA
- 6 NUCLEO SERVICIO
- 6 PLAZA ACCESO

PLANTA BAJA 1:250

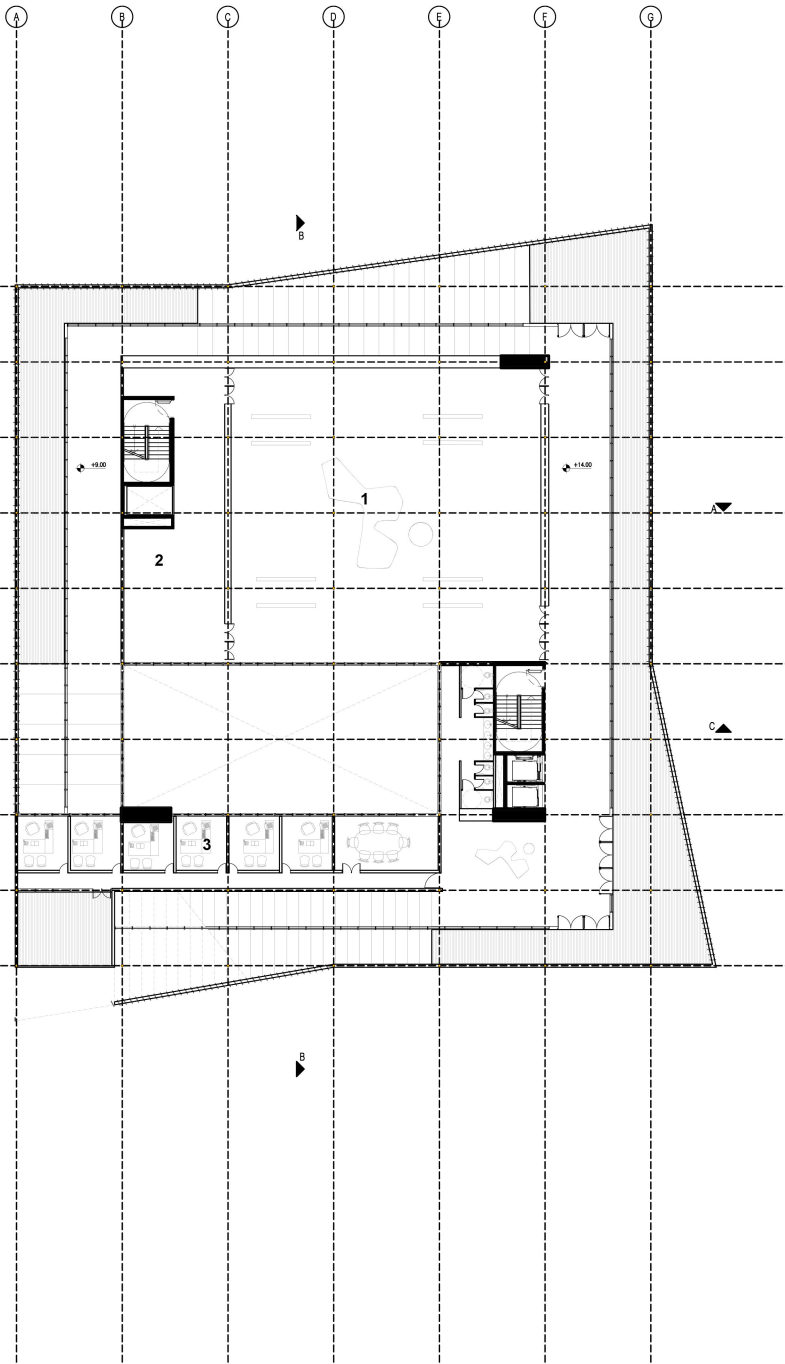


PLANTA +5.00 1:250

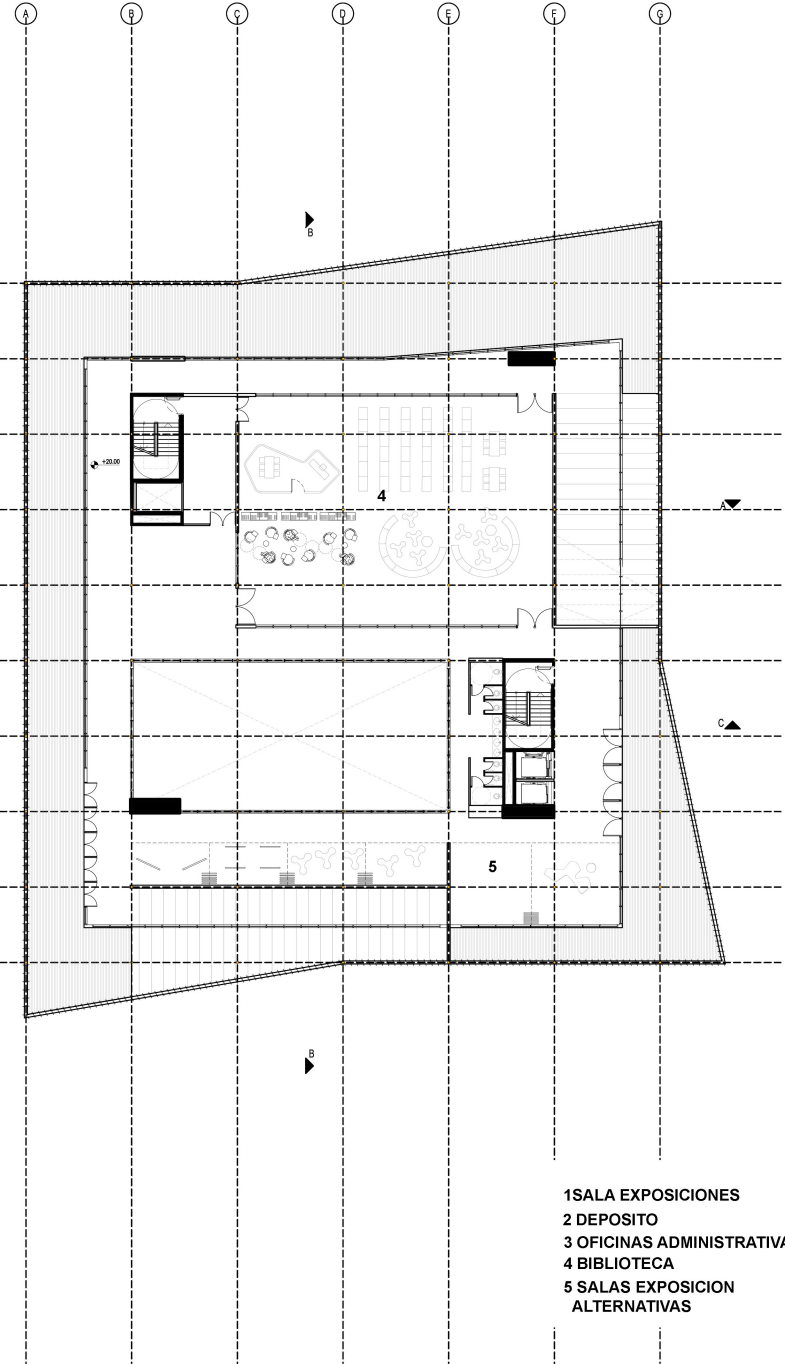


- 1 AUDITORIO
- 2 DEPOSITO
- 3 RECONSTRUCCION DE ARTE
- 4 CAMARINES
- 5 GUARDARROPA
- 6 CABINA

PLANTA +8.00 1:250

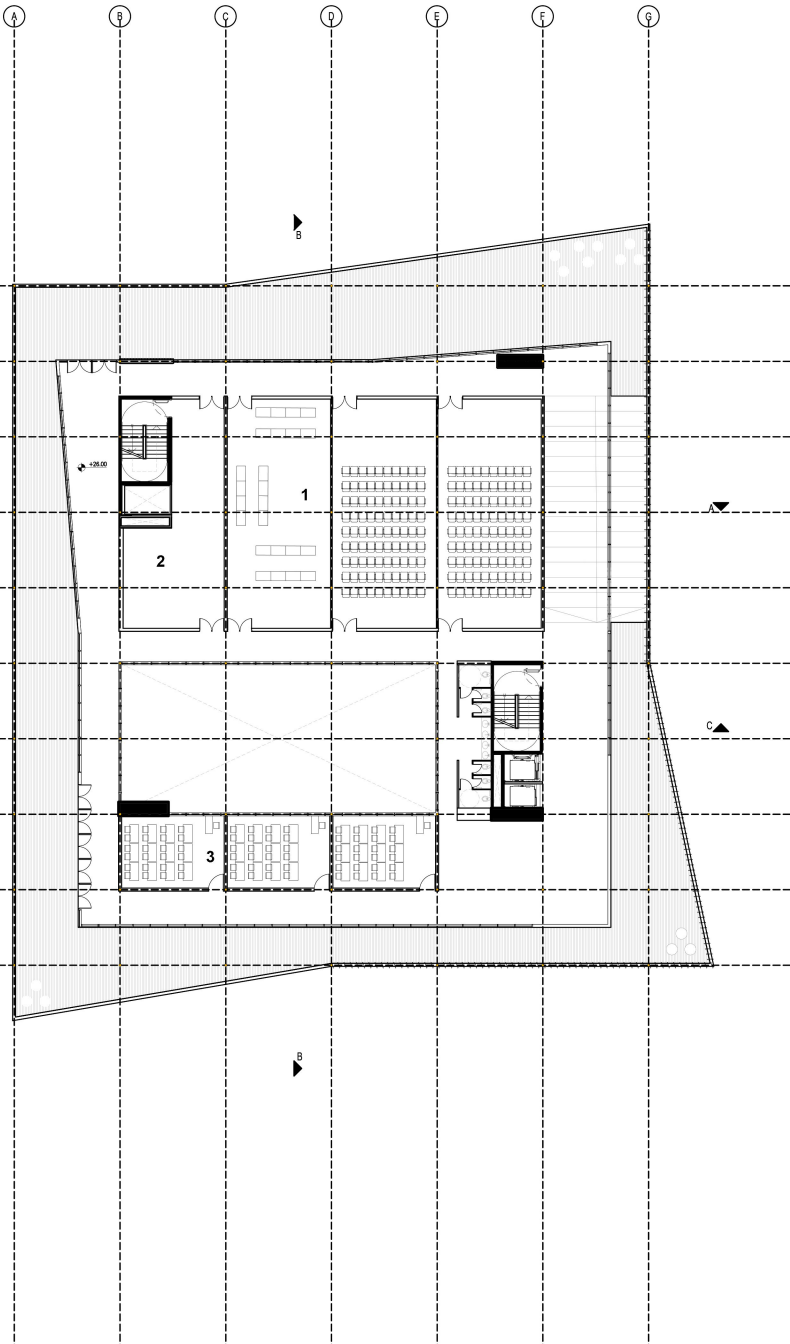


PLANTA +14.00 1:250

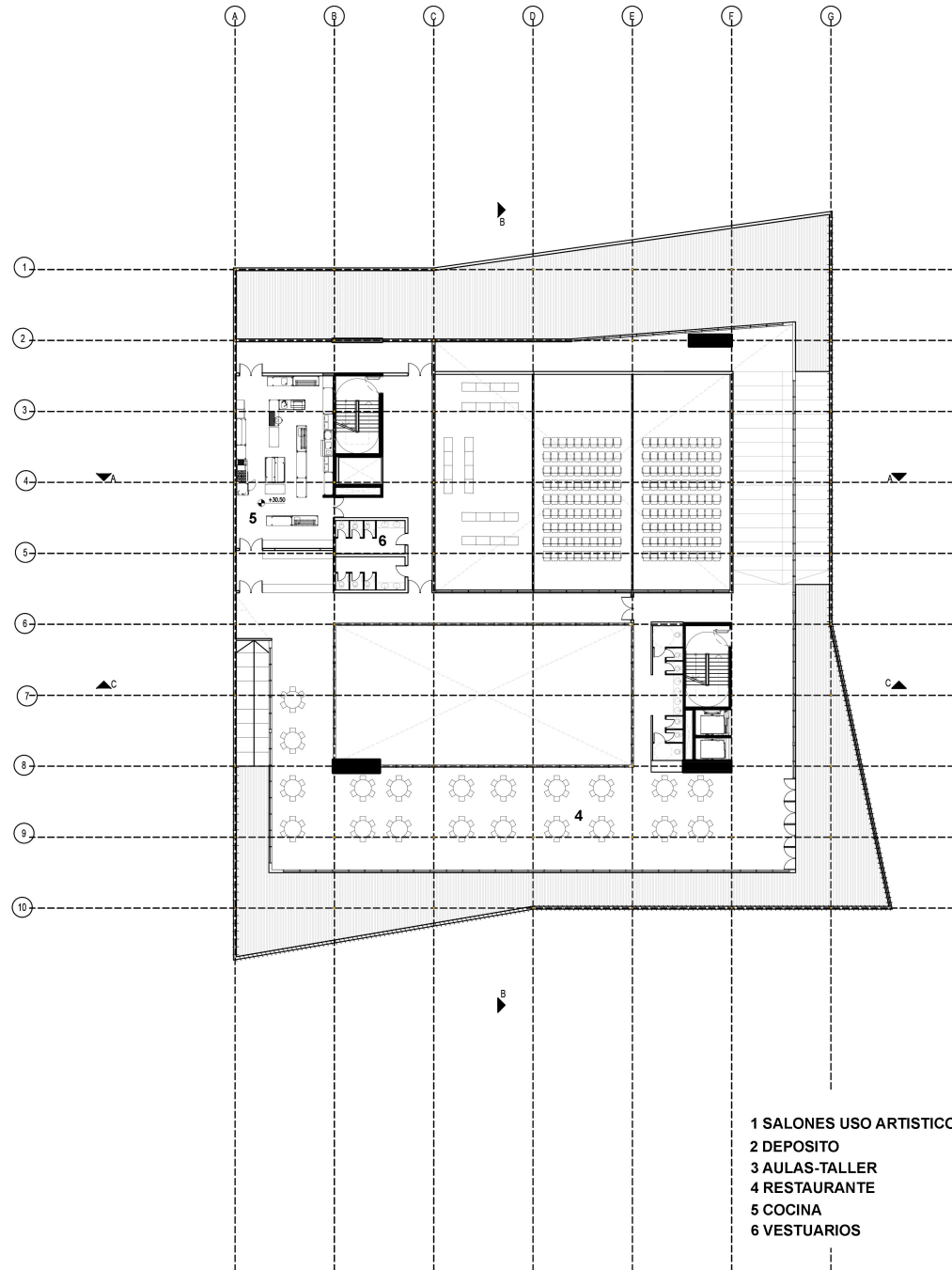


PLANTA +20.00 1:250

- 1 SALA EXPOSICIONES
- 2 DEPOSITO
- 3 OFICINAS ADMINISTRATIVAS
- 4 BIBLIOTECA
- 5 SALAS EXPOSICION ALTERNATIVAS

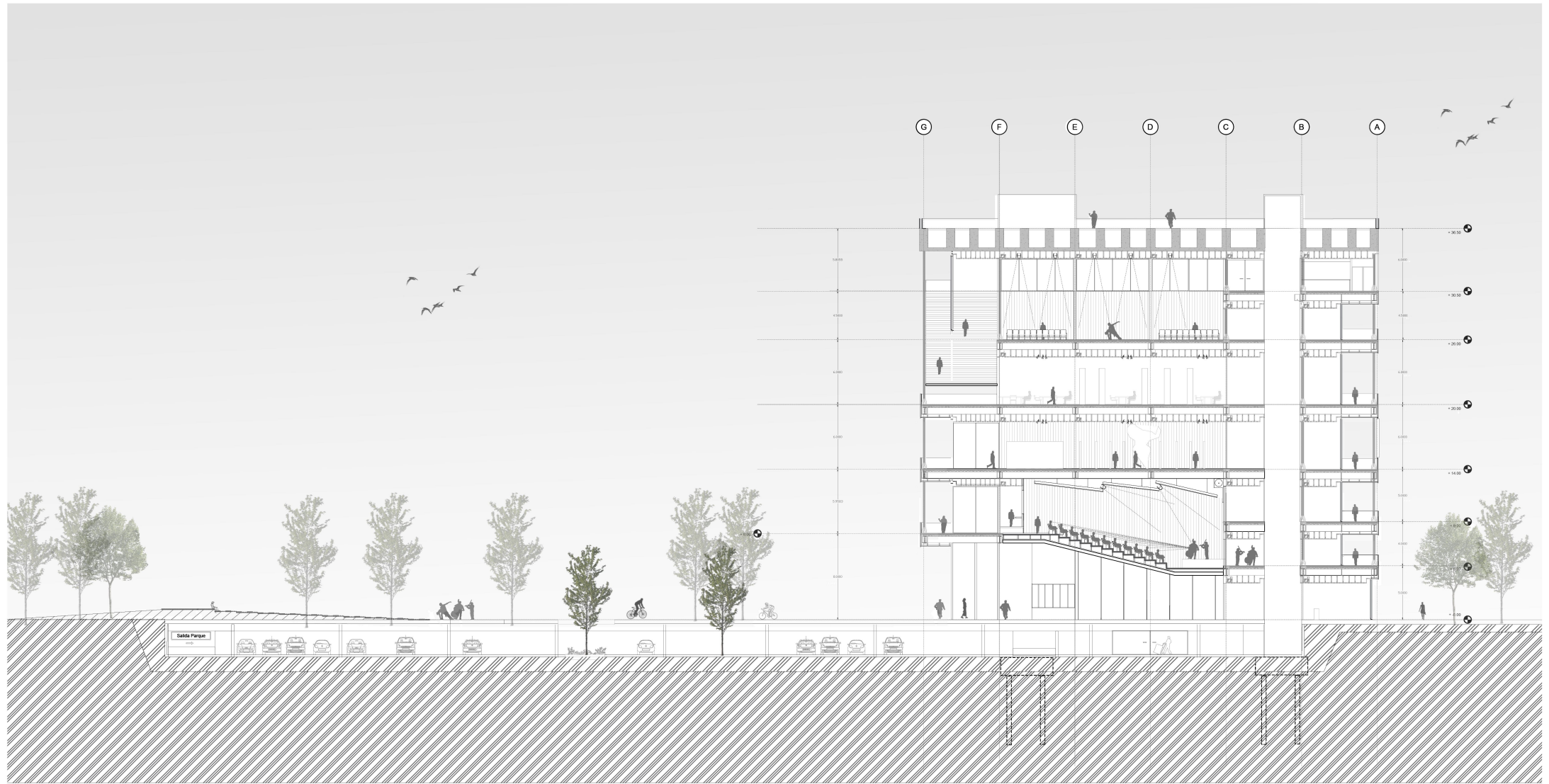


PLANTA +26.00 1:250



PLANTA +30.50 1:250

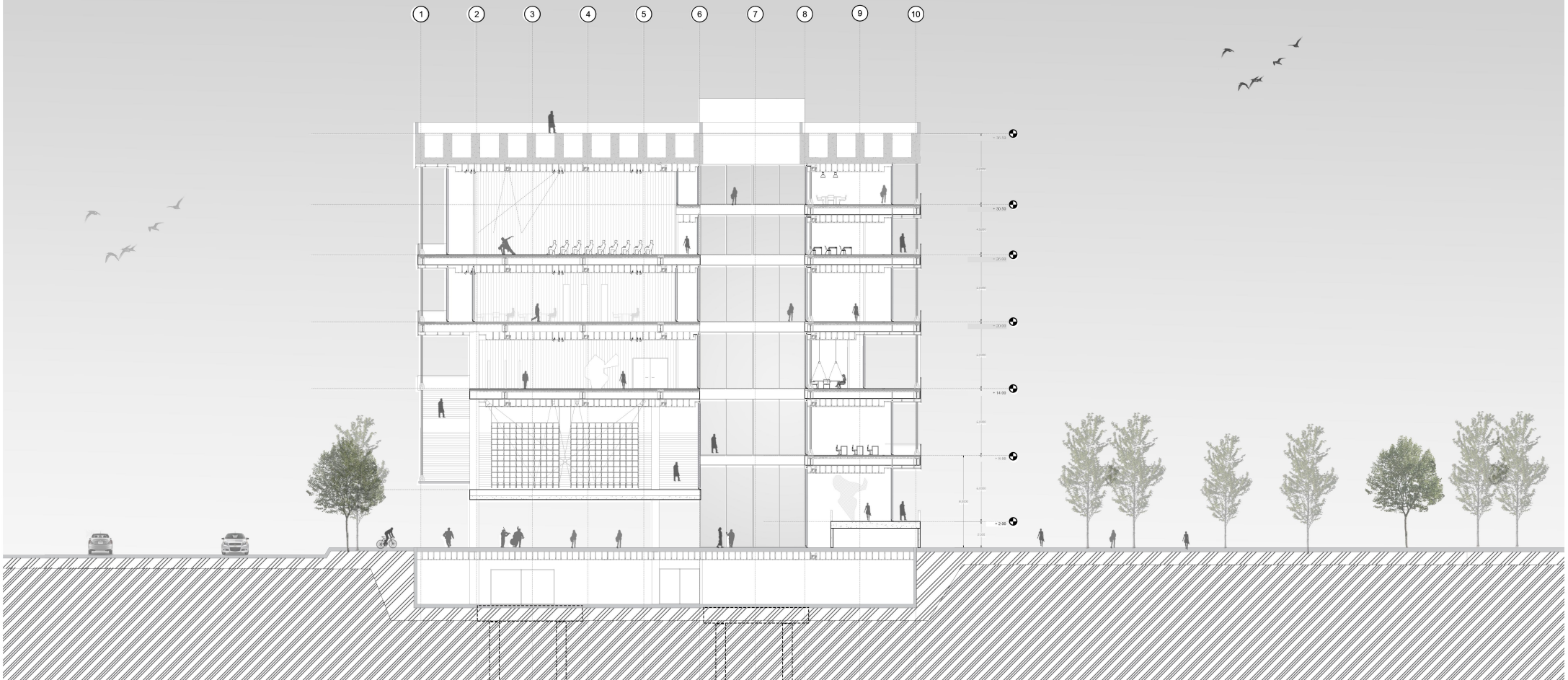
- 1 SALONES USO ARTISTICO
- 2 DEPOSITO
- 3 AULAS-TALLER
- 4 RESTAURANTE
- 5 COCINA
- 6 VESTUARIOS



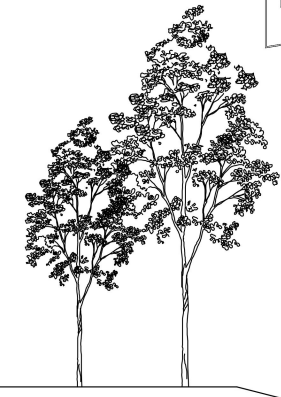
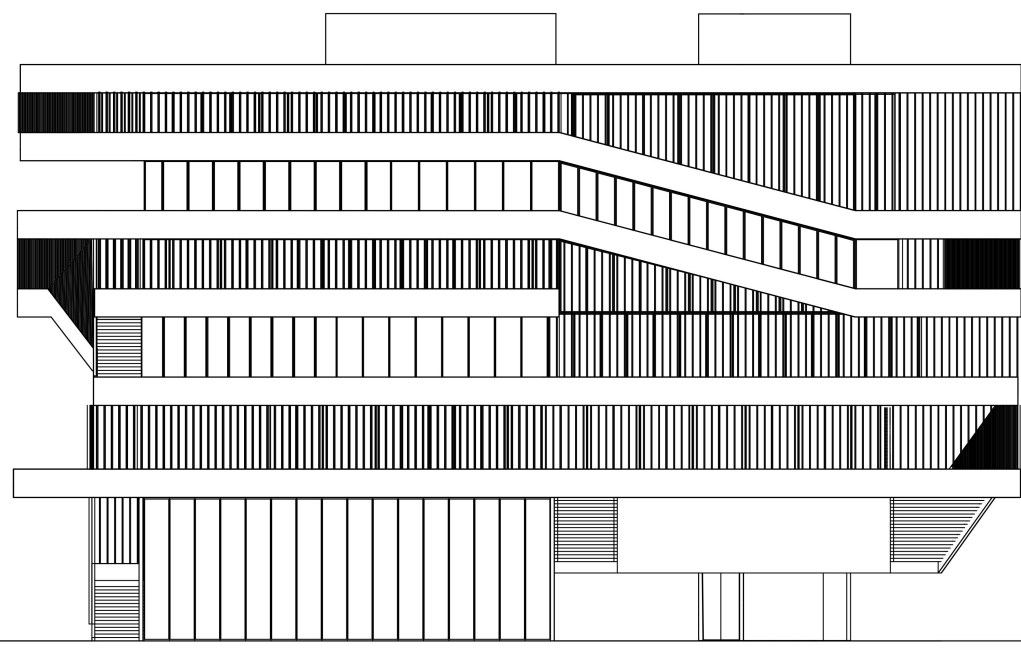
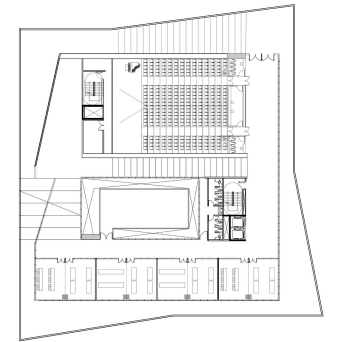
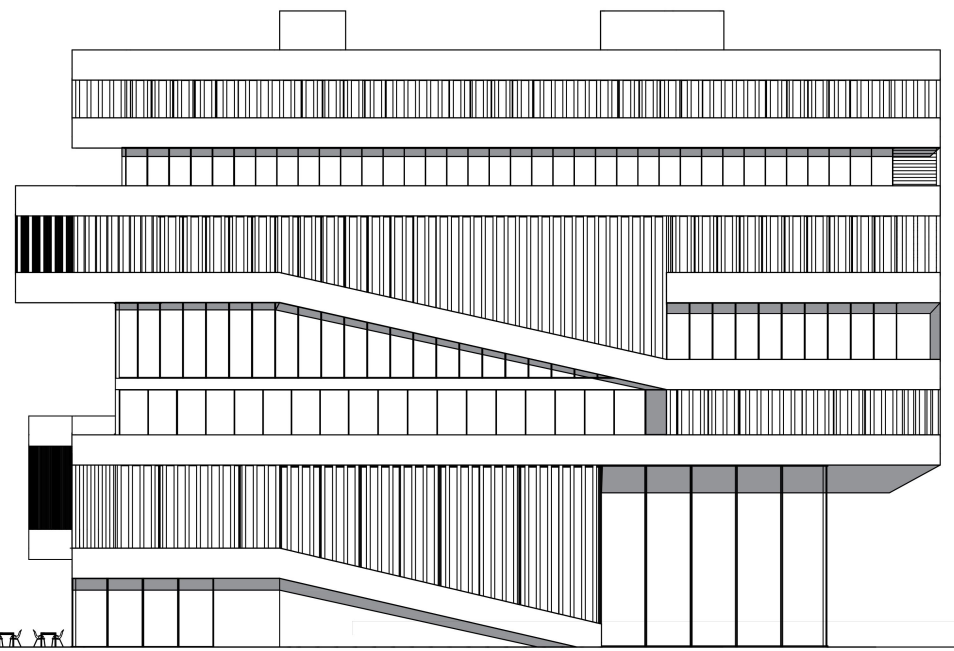
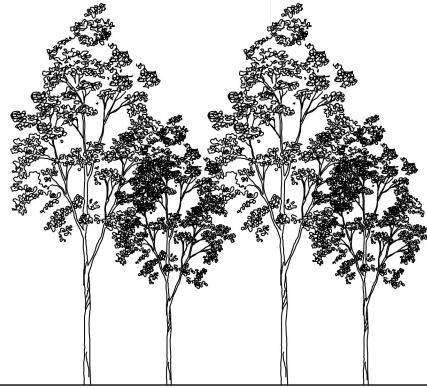
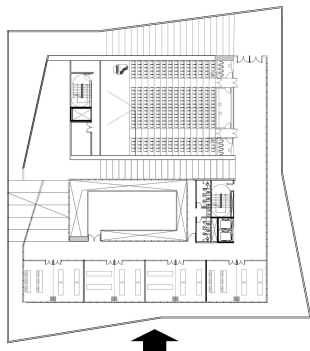
CORTE LONGITUDINAL A-A

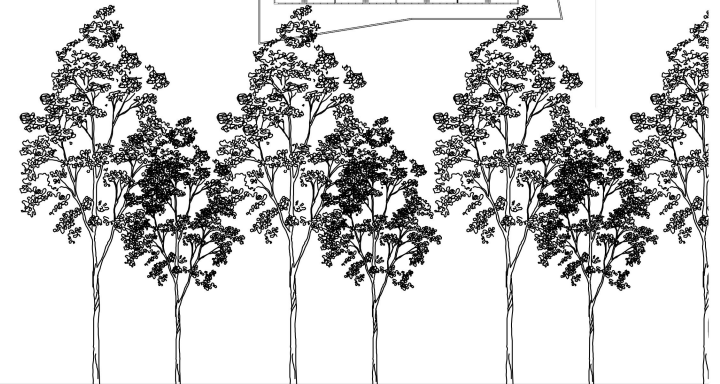
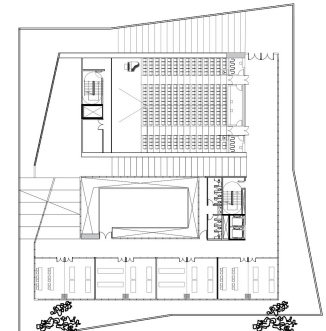
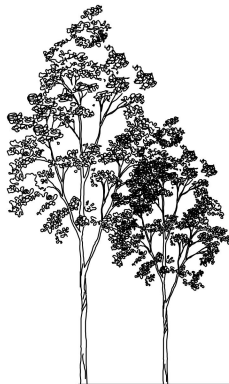
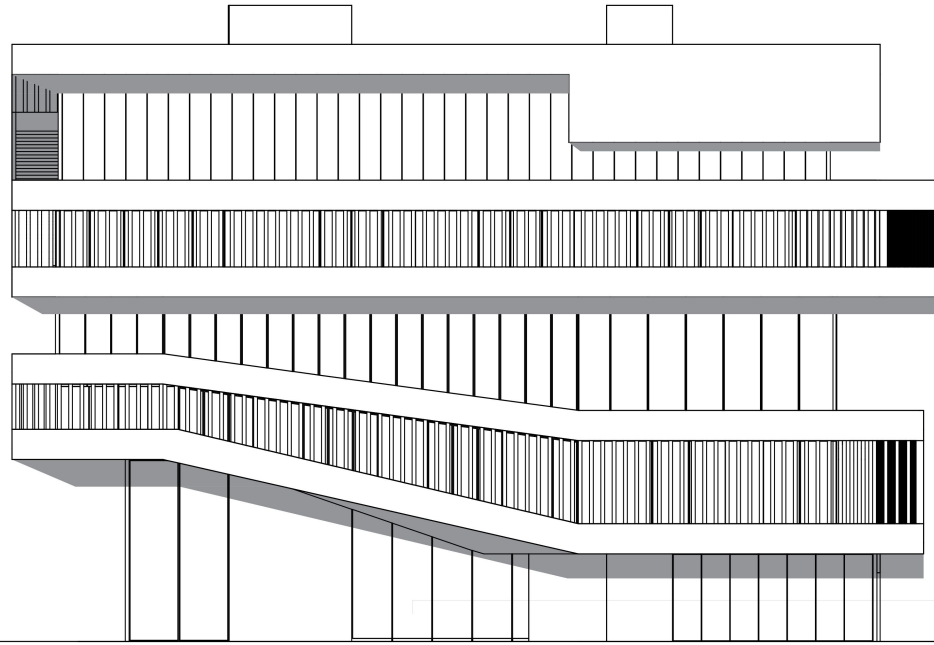
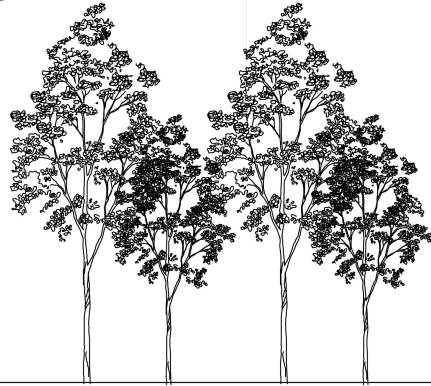
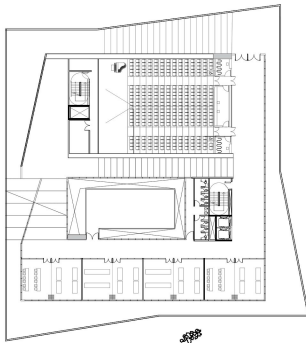


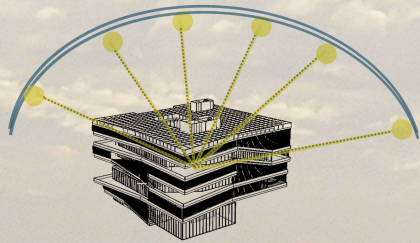
CORTE LONGITUDINAL C-C



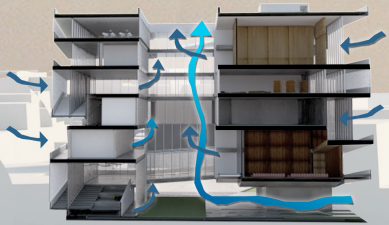
CORTE TRANSVERSAL B-B







Incidencia solar



Ventilaciones cruzadas



Visuales 360



Terraza verde



Restaurante

Aulas

Exposiciones experimentales

Oficinas administrativas

Talleres de restauracion

Hall de acceso

Terraza verde

Talleres de arte

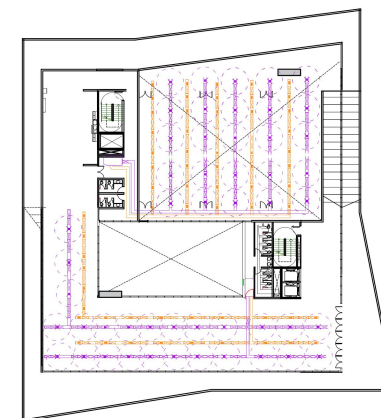
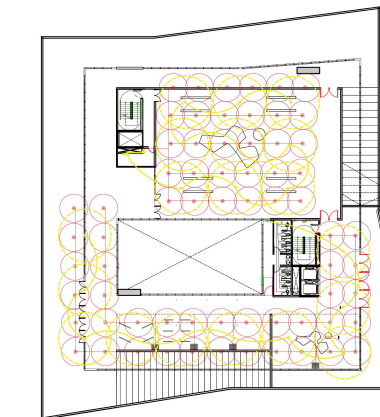
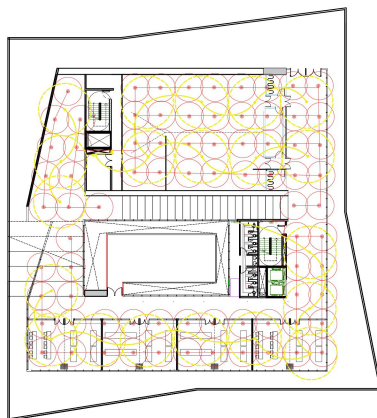
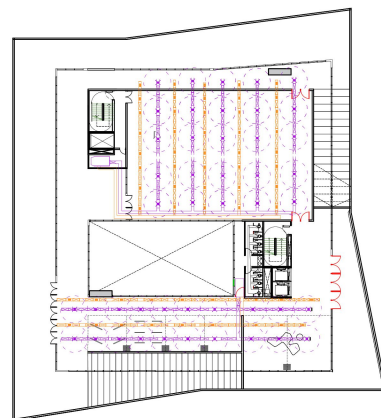
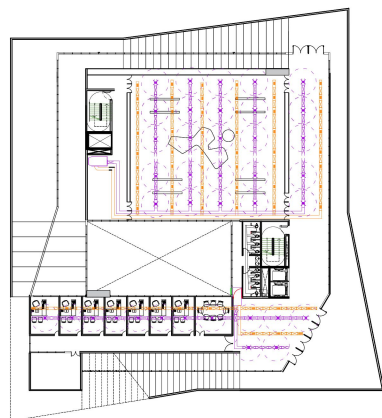
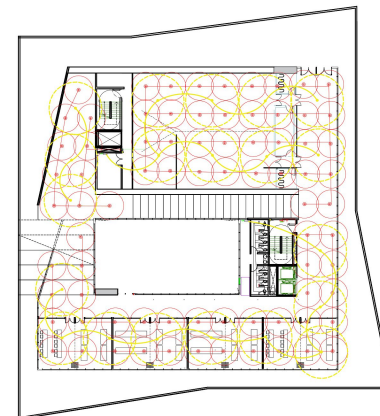
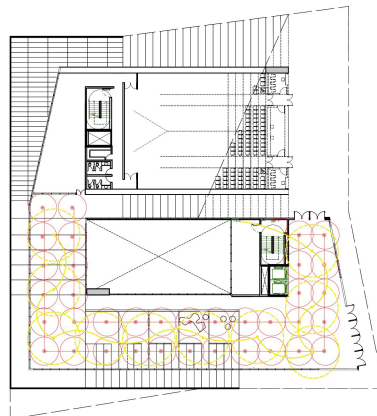
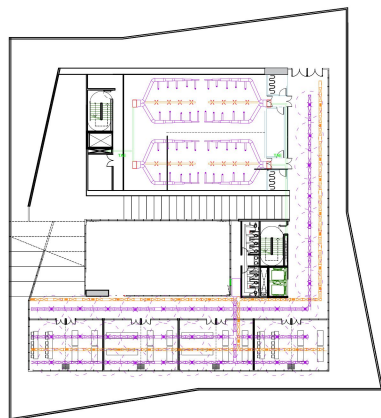
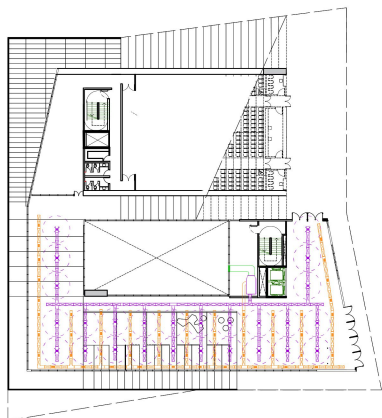
Biblioteca

Sala de exposiciones

Auditorio

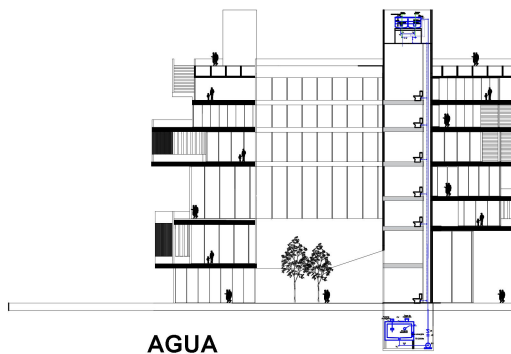
plaza de exposiciones

INSTALACIONES

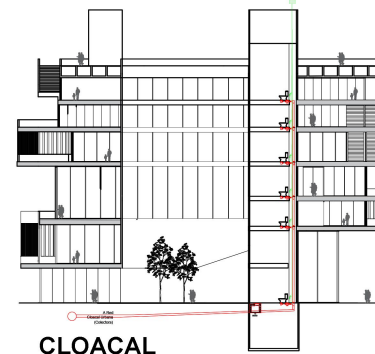


AIRE ACONDICIONADO

INCENDIO

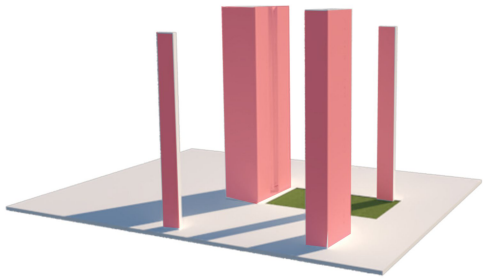


AGUA

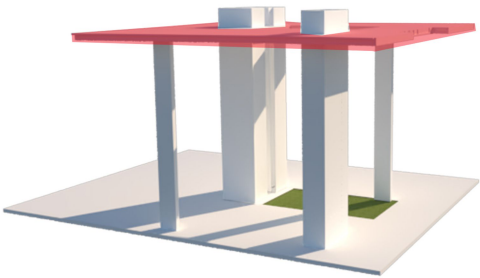


CLOACAL

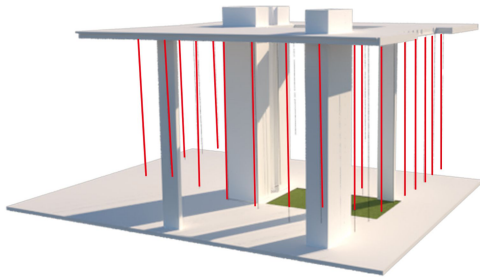
ESTRUCTURA



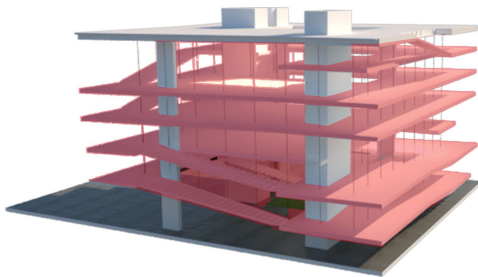
Columnas y nucleos como estructura principal



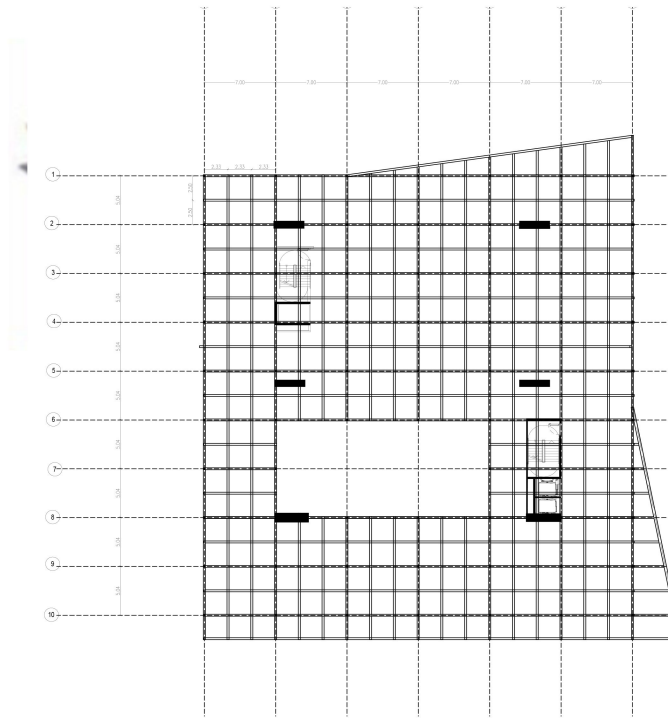
Casetonado sostenido por columnas y nucleos



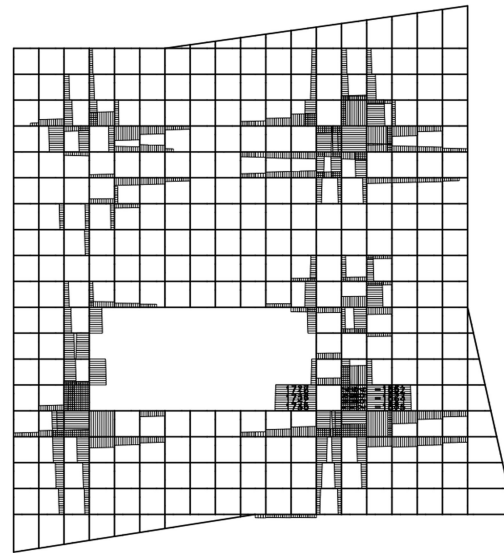
Tensores desde el casetonado



Losas sostenidas por tensores



ESTRUCTURA PRINCIPAL



V3 SHEAR LOAD NO. 1 TOTAL

DIAGRAMA DE CORTE VIGAS CASETONADO

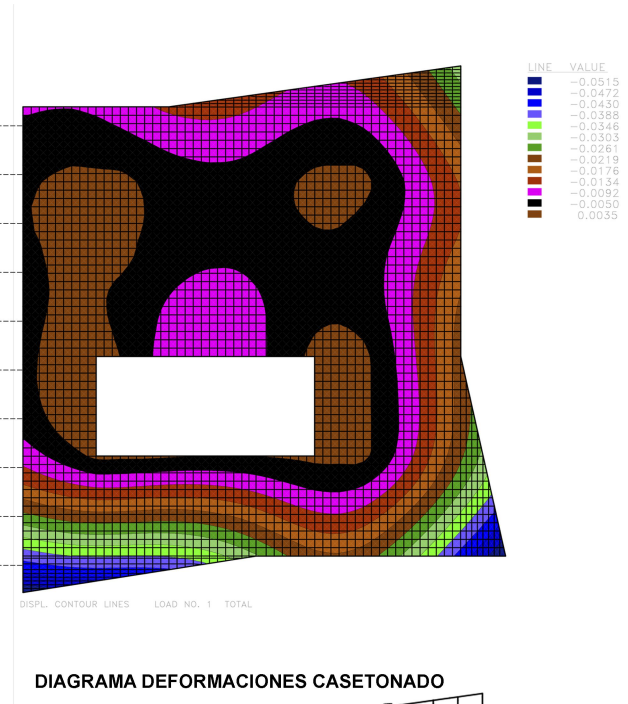
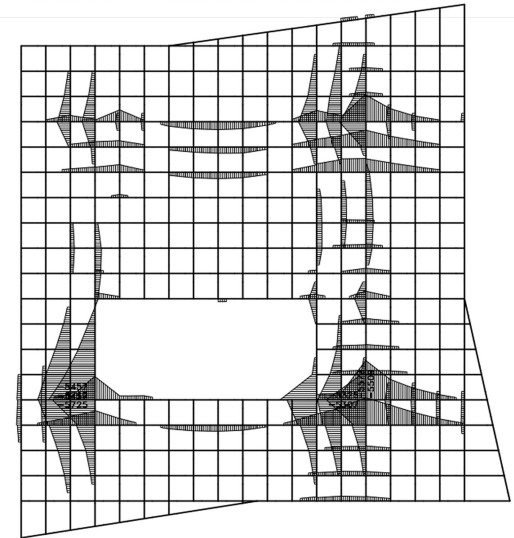


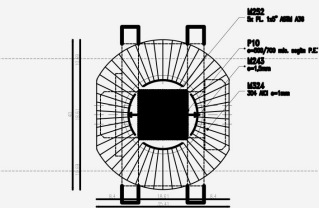
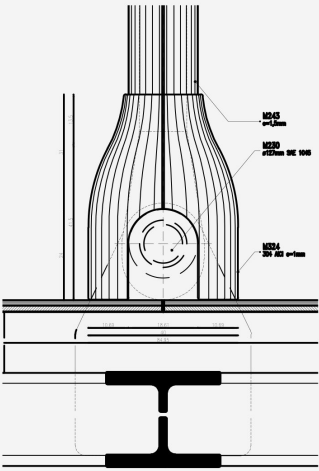
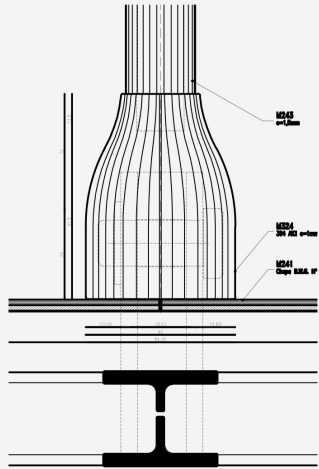
DIAGRAMA DEFORMACIONES CASETONADO



M2 MOMENT LOAD NO. 1 TOTAL

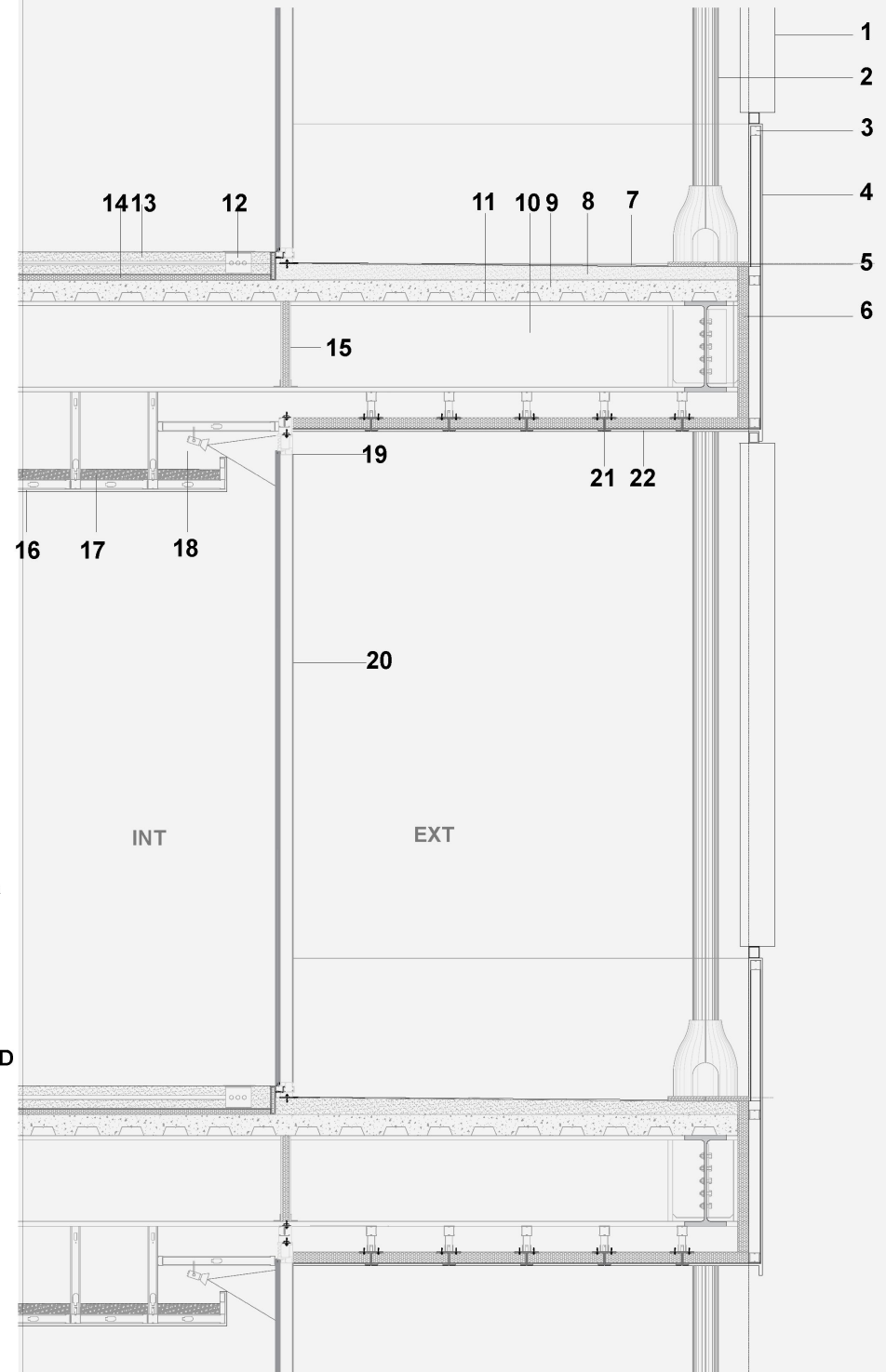
DIAGRAMA DE MOMENTOS VIGAS CASETONADO

DETALLES TENSORES



REFERENCIAS

- 1 PARASOL ALUMINIO AEROSCREEN PLANO 300 HUNTER DOUGLAS O SIMILAR
- 2 TENSORES DE ACERO
- 3 ESTRUCTURA METALICA PARA SOSTENER ANTEPECHO
- 4 ANTEPECHO ALUMINIO ALUCOBOND O SIMILAR
- 5 PLACA METALICA -APOYO DE TENSORES
- 6 AISLACION TERMICA
- 7 CARPETA HIDROFUGA
- 8 CONTRAPISO HORMIGON CELULAR
- 9 METALDECK
- 10 VIGA DOBLE T DE ACERO
- 11 PINTURA INTUMECENTE(CONTRA INCENDIO)
- 12 CAJA EN CONTRAPISO PARA COLOCACION DE INSTALACIONES
- 13 CONTRAPISO HORMIGON CELULAR
- 14 AISLACION TERMICA
- 15 PUENTE TERMICO ENTRE EXT - INT
- 16 CIELORRASO PLACA DURLOCK EXSOUND
- 17 AISLACION TERMICA SOBRE CIELORRASO
- 18 GARGANTA PARA COLOCACION DE LUMINARIA
- 19 CARPINTERIA DE ALUMINIO
- 20 VIDRIO DVH
- 21 ESTRUCTURA METALICA PARA SOSTENER CIELORRASO
- 22 CIELORRASO EXTERIOR ALUMINIO ALUCOBOND O SIMILAR



DETALLE CONSTRUCTIVO 1:25



P
E
R
S
P
E
C
T
I
V
A
S

